



MASTER MHN-FC

MASTER MHN-FC 1000W/740 230V XW

Compact quartz metal halide lamps with double pinch

Warnings and Safety

- Use only in totally enclosed luminaire, even during testing (IEC61167, IEC 62035, IEC60598)
- The luminaire must be able to contain hot lamp parts if the lamp ruptures
- A lamp breaking is extremely unlikely to have any impact on your health. If a lamp breaks, ventilate the room for 30 minutes and remove the parts, preferably with gloves. Put them in a sealed plastic bag and take it to your local waste facilities for recycling. Do not use a vacuum cleaner.

Product data

General Information	
Cap base	Double Ended
Operating position	P5 [Parallel +/-5D or Horizontal(HOR)]
Life to 50% failures (nom.)	12,000 h
Light Technical	
Colour Code	740 [CCT of 4000K]
Colour designation	White (WH)
Chromaticity Coordinate X (Nom)	374
Chromaticity Coordinate Y (Nom)	366
Correlated Colour Temperature (Nom)	4100 K
Luminous efficacy (rated) (nom.)	91 lm/W
Colour rendering index (CRI)	65
Arc Length O (Nom)	42.5 mm
Operating and Electrical	
Power Consumption	1,040.0 W
Voltage (nom.)	130 V

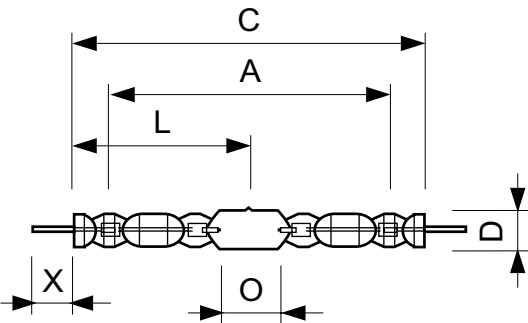
Controls and Dimming	
Dimmable	No
Mechanical and Housing	
Lamp Finish	Clear
Net Weight (Piece)	140.000 g
Approval and Application	
Mercury (Hg) content (nom.)	74 mg
Energy consumption kWh/1,000 hours	1,144 kWh
CE mark	Yes
Product Data	
Order product name	MASTER MHN-FC 1000W/740 230V XW
Full product name	MASTER MHN-FC 1000W/740 230V XW
Full EOC	871150021424900
Order code	21424900
Material no. (12 NC)	928075705130
Local order code	MHNF1000W740

MASTER MHN-FC

Numerator – quantity per pack	1
EAN/UPC – Product/Case	8718291548256
Numerator – packs per outer box	1

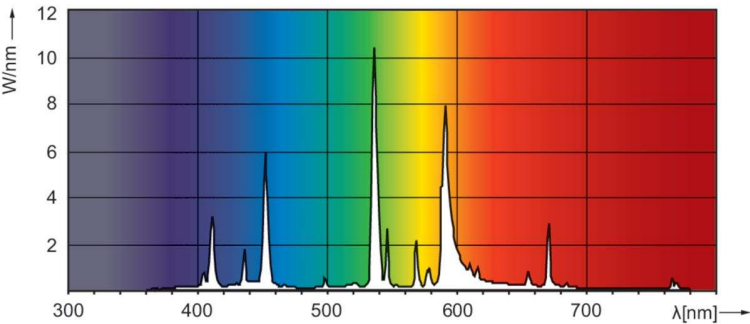
EAN/UPC – Case	8711500214249
----------------	---------------

Dimensional drawing



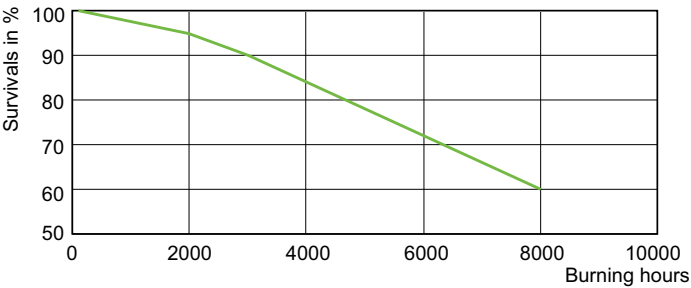
Product	D (max)	D	O	X	L	A	C (max)
MASTER MHN-FC	33 mm	25.5 mm	42.5 mm	58 mm	144 mm	226 mm	290 mm
1000W/740 230V XW							

Photometric data

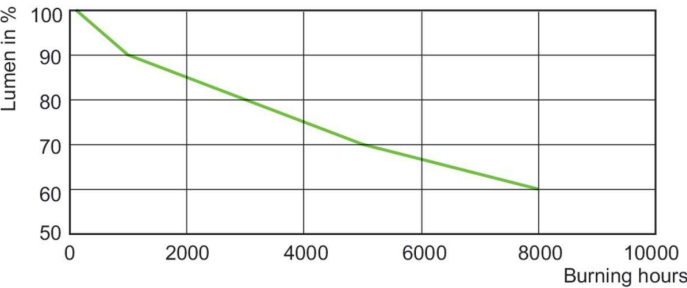


Spectral Power Distribution Colour - MASTER MHN-FC 1000W/740 230V XW

Lifetime



LDLE_MHN-FC_1000W_740_750-Life expectancy diagram



Lumen Maintenance Diagram - MASTER MHN-FC 1000W/740 230V XW

